



#	Quantity	חומר	הערות	דקדוק	L/DH	Image
M1	1	BAN MARIE UNIT 4GN (ST. STEEL) 1500MM	על ידי המכשיר	304 AISI stainless steel workshop with rounded edges. Workshop thickness 50mm. (Side panels) stainless steel. Gaskets with stainless steel doors on operator side. Well with rounded corners able to accommodate ON V1 containers max. h=200mm This included: Draining fan, 24V DC, 10W, 1200 RPM, 180° rotation, 100% duty cycle. 400-140 °C. Digital control panel. Electronic overheating protection. Overheated with heating light. Temperature sensor with alarm. Can be installed on customer side of the unit, folds down in order to facilitate passage of the unit through doorways. The unit is mounted on 4 wheels (150mm high).	150/90/132	
M2	1	UNIT WREFF WELL 4GN (ST. STEEL) 1500MM	על ידי המכשיר	304 AISI stainless steel workshop with rounded edges. Refrigerated static well with rounded corners. Thermoplastic controlled temperature can be set between +10°C to -10°C. In 304 AISI stainless steel with drain hole and pipe. Well is suited to accommodate 60 L V1 containers (max). Termination panel with LED lighting and cold lights. Side panels in stainless steel. Ambient cupboard with doors in stainless steel or operator side. Tray slide in stainless steel. Well height adjustable on customer side of the unit, folds down in order to facilitate passage of the unit through doorways. The unit is mounted on 4 wheels (150mm high).	150/90/132	
M	1	תוסף חשמל	תוסף חשמל	יכולים להשתמש בהם למטרות אחרות. תוחלת החיים של מערכת 150 שנה לפחות. המערכת עומדת בתנאי הסביבה הקשים ביותר. 304 AISI סגור ובעל מנגנון בטיחות. המערכת קלה ופשוטה לשימוש. ניתן לשלוט במערכת באמצעות מחשב או טאבלט. ניתן לבנות מערכות נוספות בעלות גודל עד פי כמה מאשר המוצר הנתון. ניתן להתאים את המערכת לתנאי האזור בו היא משמשת. ניתן לשלב את המערכת עם מערכות אחרות. ניתן לשלב את המערכת עם מערכות אחרות.	413/88/90	

Grand total: 3

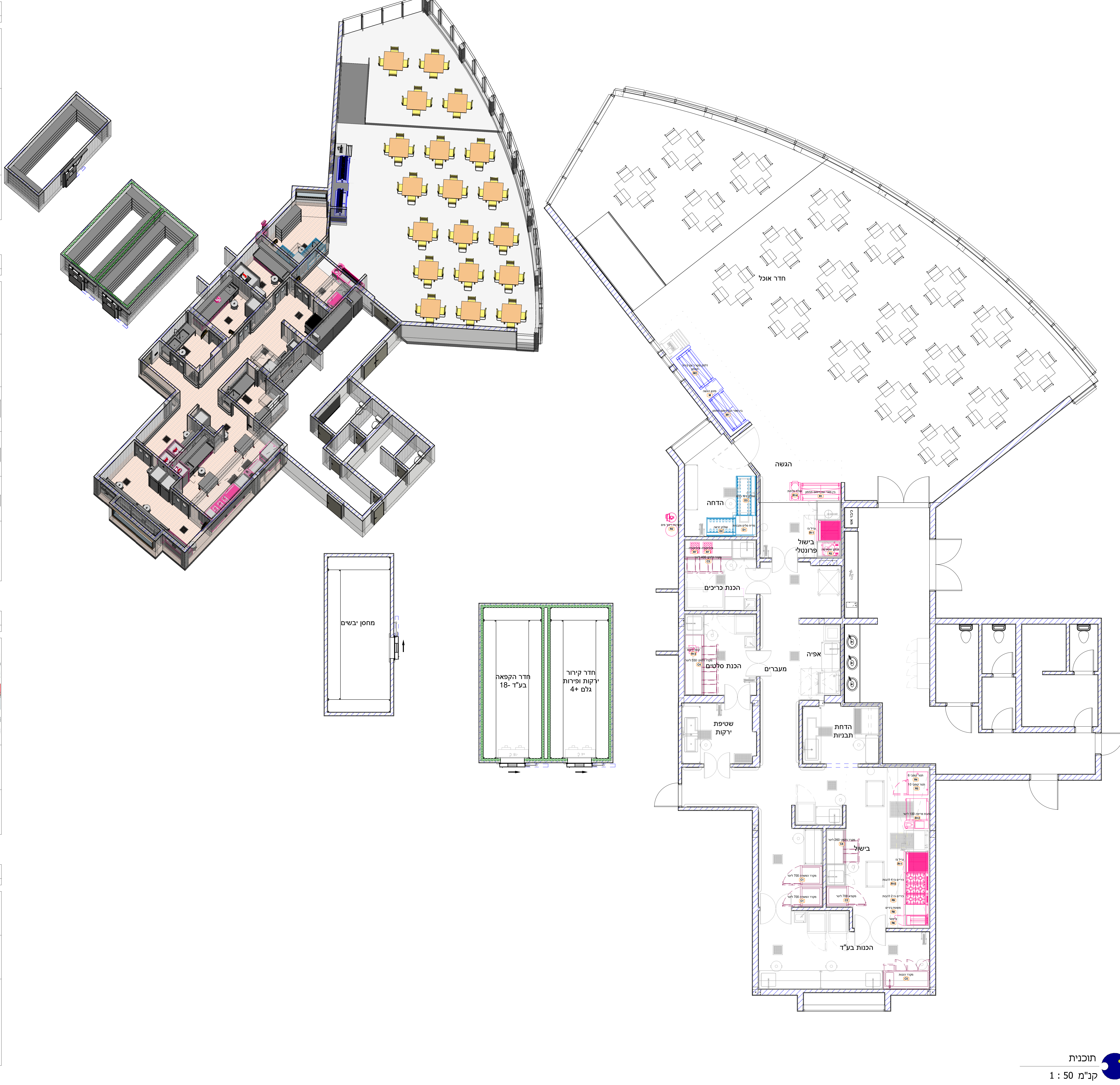
#	Quantity	חומר	חומר	דרישות	LDH	Image	
C1	2	CABINET MASTER 700 LIT +/- 1°C - 1 DOOR	700 לטר מחיר יחידה	Exterior/interior finishing: Stainless steel AISI 304 18/10. Back in galvanized steel, insulation: 75 mm thickness. C-FCHFC/CF Inc. Cover evaporator: Removable in stainless steel AISI 304 C-N 18/10. Internal racks and slides: Stainless steel AISI 304 18/10. Inner drawers: Round corners ensuring maximum hygiene. Feet: Stainless steel AISI 304 adjustable 100-150 mm. Door: Self-closing, invertible with 125° dead. Door handle: Stainless steel AISI 304 C-N 18/10. Door gasket: Magnetic. easy to replace	74/62/209		
C2	1	CABINET SMART 700 LIT -18/-22°C 1 DOOR RIGHT TO LEFT	700 לטר מחיר יחידה	Exterior/interior finishing: Stainless steel AISI 304 18/10. Back in galvanized steel, insulation: 75 mm thickness. C-FCHFC/CF Inc. Cover evaporator: Removable in PVC. Internal racks and slides: Stainless steel AISI 304 18/10. Inner drawers: Round corners ensuring maximum hygiene. Feet: Stainless steel AISI 304 adjustable 100-150 mm. Door: Self-closing, invertible with 125° dead. Door handle: Integrated in PVC. Door gasket: Magnetic, easy to replace	74/62/209		
C6	1	COUNTER MASTER ON 40 (+/-12) -2°C WITH C-TR	260 יחידות מחיר יחידה	Exterior/interior finishing: Stainless steel AISI 304 18/10. Back in Stainless steel AISI 304. Insulation: 60 mm thickness. C-FCHFC/CF Inc. Cover evaporator: Removable in stainless steel AISI 304 C-N 18/10. Internal racks and slides: Stainless steel AISI 304 18/10. Inner drawers: Round corners ensuring maximum hygiene. Feet: Stainless steel AISI 304 adjustable 100-150 mm. Drawers: Fully extension on telescopic guides in stainless steel. Door/Drawers handle: Stainless steel AISI 304. Door gasket: Magnetic, easy to replace	130/70/85		
C3	1	COUNTER MASTER ON 60 (+/-12) -2°C WITH C-TR	400 יחידות מחיר יחידה	Exterior/interior finishing: Stainless steel AISI 304 18/10. Back in Stainless steel AISI 304. Insulation: 60 mm thickness. C-FCHFC/CF Inc. Cover evaporator: Removable in stainless steel AISI 304 C-N 18/10. Internal racks and slides: Stainless steel AISI 304 18/10. Inner drawers: Round corners ensuring maximum hygiene. Feet: Stainless steel AISI 304 adjustable 100-150 mm. Drawers: Fully extension on telescopic guides in stainless steel. Door/Drawers handle: Stainless steel AISI 304. Door gasket: Magnetic, easy to replace	178/70/85		
G4	1	COUNTER MASTER ON 80 (+/-12) -2°C WITH C-TR	550 יחידות מחיר יחידה	Exterior/interior finishing: Stainless steel AISI 304 18/10. Back in Stainless steel AISI 304. Insulation: 60 mm thickness. C-FCHFC/CF Inc. Cover evaporator: Removable in stainless steel AISI 304 C-N 18/10. Internal racks and slides: Stainless steel AISI 304 18/10. Inner drawers: Round corners ensuring maximum hygiene. Feet: Stainless steel AISI 304 adjustable 100-150 mm. Drawers: Fully extension on telescopic guides in stainless steel. Door/Drawers handle: Stainless steel AISI 304. Door gasket: Magnetic, easy to replace	226/70/85		
G5	1	P.FISH VEGETABLE PREP TABLE 2 DOOR	מחיר יחידה	(Based on a new concept which allows both the preparation and conservation of fish or vegetables, this unit provides a wide range of advantages to the end-user. As a result of a meticulous ergonomic study of the preparation different tasks, this solution provides an excellent functionality level. Ergonomically designed work surface with sink, extendable tap, lateral placed waste tray, chopping top. Preparation with polyethylene plates, rounded outside corners. Round racks and wire mesh can be positioned to substantially simplify the end-use water work. High-Efficiency EPC by choosing the HEIG option. The HEIG is a result of a year of intense Cooling Load advanced research, monitoring and testing. This innovation integrates the most advanced energy saving electro-chemical parts available in the market.			176/70/85

Grand total: 7

[illegible]

#	Quantity	חומר	חומר	דרישות	LDH	Image	
C1	2	CABINET MASTER 700 LIT +/- 1°C - 1 DOOR	700 לטר מחיר יחידה	Exterior/interior finishing: Stainless steel AISI 304 18/10. Back in galvanized steel, insulation: 75 mm thickness. C-FCHFC/CF Inc. Cover evaporator: Removable in stainless steel AISI 304 C-N 18/10. Internal racks and slides: Stainless steel AISI 304 18/10. Inner drawers: Round corners ensuring maximum hygiene. Feet: Stainless steel AISI 304 adjustable 100-150 mm. Door: Self-closing, invertible with 125° dead. Door handle: Stainless steel AISI 304 C-N 18/10. Door gasket: Magnetic. easy to replace	74/62/209		
C2	1	CABINET SMART 700 LIT -18/-22°C 1 DOOR RIGHT TO LEFT	700 לטר מחיר יחידה	Exterior/interior finishing: Stainless steel AISI 304 18/10. Back in galvanized steel, insulation: 75 mm thickness. C-FCHFC/CF Inc. Cover evaporator: Removable in PVC. Internal racks and slides: Stainless steel AISI 304 18/10. Inner drawers: Round corners ensuring maximum hygiene. Feet: Stainless steel AISI 304 adjustable 100-150 mm. Door: Self-closing, invertible with 125° dead. Door handle: Integrated in PVC. Door gasket: Magnetic, easy to replace	74/62/209		
C6	1	COUNTER MASTER ON 40 (+/-12) -2°C WITH C-TR	260 יחידות מחיר יחידה	Exterior/interior finishing: Stainless steel AISI 304 18/10. Back in Stainless steel AISI 304. Insulation: 60 mm thickness. C-FCHFC/CF Inc. Cover evaporator: Removable in stainless steel AISI 304 C-N 18/10. Internal racks and slides: Stainless steel AISI 304 18/10. Inner drawers: Round corners ensuring maximum hygiene. Feet: Stainless steel AISI 304 adjustable 100-150 mm. Drawers: Fully extension on telescopic guides in stainless steel. Door/Drawers handle: Stainless steel AISI 304. Door gasket: Magnetic, easy to replace	130/70/85		
C3	1	COUNTER MASTER ON 60 (+/-12) -2°C WITH C-TR	400 יחידות מחיר יחידה	Exterior/interior finishing: Stainless steel AISI 304 18/10. Back in Stainless steel AISI 304. Insulation: 60 mm thickness. C-FCHFC/CF Inc. Cover evaporator: Removable in stainless steel AISI 304 C-N 18/10. Internal racks and slides: Stainless steel AISI 304 18/10. Inner drawers: Round corners ensuring maximum hygiene. Feet: Stainless steel AISI 304 adjustable 100-150 mm. Drawers: Fully extension on telescopic guides in stainless steel. Door/Drawers handle: Stainless steel AISI 304. Door gasket: Magnetic, easy to replace	178/70/85		
G4	1	COUNTER MASTER ON 80 (+/-12) -2°C WITH C-TR	550 יחידות מחיר יחידה	Exterior/interior finishing: Stainless steel AISI 304 18/10. Back in Stainless steel AISI 304. Insulation: 60 mm thickness. C-FCHFC/CF Inc. Cover evaporator: Removable in stainless steel AISI 304 C-N 18/10. Internal racks and slides: Stainless steel AISI 304 18/10. Inner drawers: Round corners ensuring maximum hygiene. Feet: Stainless steel AISI 304 adjustable 100-150 mm. Drawers: Fully extension on telescopic guides in stainless steel. Door/Drawers handle: Stainless steel AISI 304. Door gasket: Magnetic, easy to replace	226/70/85		
G5	1	P.FISH VEGETABLE PREP TABLE 2 DOOR	מחיר יחידה	(Based on a new concept which allows both the preparation and conservation of fish or vegetables, this unit provides a wide range of advantages to the end-user. As a result of a meticulous ergonomic study of the preparation different tasks, this solution provides an excellent functionality level. Ergonomically designed work surface with sink, extendable tap, lateral placed waste tray, chopping top. Preparation with polyethylene plates, rounded outside corners. Round racks and wire mesh can be positioned to substantially simplify the end-use water work. High-Efficiency EPC by choosing the HEIG option. The HEIG is a result of a year of intense Cooling Load advanced research, monitoring and testing. This innovation integrates the most advanced energy saving electro-chemical parts available in the market.			176/70/85

Grand total: 7

[illegible]

www.bf-ar.com

FCSI **IFSE**
FOODSERVICE CONSULTANTS SOCIETY INTERNATIONAL
EUROPE - AFRICA - MIDDLE EAST
INTERNATIONAL
FOOD SERVICE
EQUIPMENT
BIM Standard